



REDUCE MOULD GROWTH IN YOUR MOBILE OVER THE WINTER

AbsorGel[®] Blanket

The AbsorGel[®] Blanket is based on its proven ability to aggressively remove moisture from the air. The absorbed water is bound into a gel so no liquid water is formed, eliminating leakage risk. It is easy to use and has a high performance and long lasting absorption rate which offers efficient protection all year round.



Adhesive Pad

W435 x L1200 mm
weight 2kg

How AbsorGel Blanket works

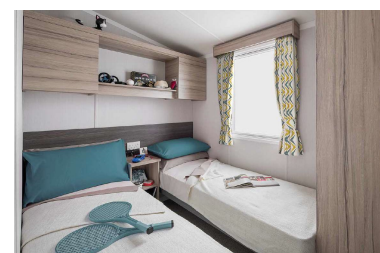
AbsorGel[®] Blanket starts working as soon as it is removed from its transparent sealed packaging.

It can be placed on top of couches or mattresses. The Blanket absorbs moisture from the surrounding air passing in through its breathable packaging.

AbsorGel's viscous gel ensures absorbed moisture stays in the blanket. A film of recyclable PE plastic on the lower side ensures that moisture cannot escape below.

Disposal

Our products are intended for single-use and can be disposed of as regular waste. The Blanket (and its contents) are non-toxic and recyclable.



In a recent test in two mobile homes in the South East, two AbsorGel blankets absorbed 7.1 litres of moisture over a 12 week period from Feb-April.